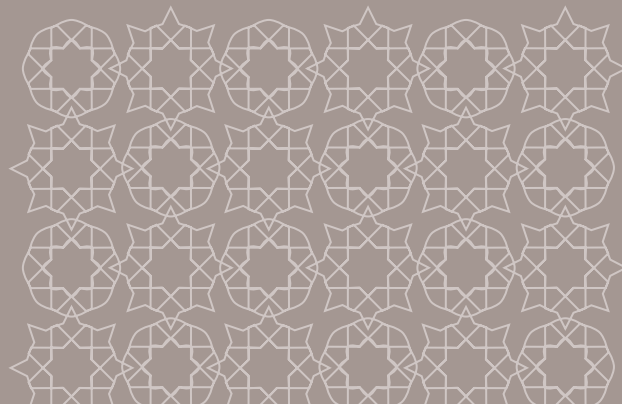


al furjan

## Floor Plans



## Ground Floor Plan



## 4 Bedroom Villa Type 'A'

Gross floor area  
506.06 sq.m (5,447.18 sq.ft)

Total terrace area  
151.05 sq.m (1,625.89 sq.ft)

Terraces: 3

Individual plot size  
600 sq.m (6,458 sq.ft)

## First Floor Plan



## 4 Bedroom Villa Type 'A'

Gross floor area  
506.06 sq.m (5,447.18 sq.ft)

Total terrace area  
151.05 sq.m (1,625.89 sq.ft)

Terraces: 3

Individual plot size  
600 sq.m (6,458 sq.ft)

## Ground Floor Plan



## 4 Bedroom Villa Type 'B'

Gross floor area  
455.2 sq.m (4,900 sq.ft)

Total terrace area  
110.01 sq.m (1,184.14 sq.ft)

Terraces: 3

Individual plot size  
600 sq.m (6,458 sq.ft)



## First Floor Plan



## 4 Bedroom Villa Type 'B'

Gross floor area  
455.2 sq.m (4,900 sq.ft)

Total terrace area  
110.01 sq.m (1,184.14 sq.ft)

Terraces: 3

Individual plot size  
600 sq.m (6,458 sq.ft)

## Ground Floor Plan



### 3 Bedroom Terrace Home (Middle)

Gross floor area  
301.21 sq.m (3,242.20 sq.ft)

Total terrace area  
65.79 sq.m (708.16 sq.ft)

Terraces: 2

Individual plot size  
224 sq.m (2,411 sq.ft)

## First Floor Plan



### 3 Bedroom Terrace Home (Middle)

Gross floor area  
301.21 sq.m (3,242.20 sq.ft)

Total terrace area  
65.79 sq.m (708.16 sq.ft)

Terraces: 2

Individual plot size  
224 sq.m (2,411 sq.ft)



## Ground Floor Plan



### 3 Bedroom Terrace Home (Corner)

Gross floor area  
301.21 sq.m (3,242.20 sq.ft)

Total terrace area  
65.79 sq.m (708.16 sq.ft)

Terraces: 2

Individual plot size  
224 sq.m (2,411 sq.ft)



## First Floor Plan



### 3 Bedroom Terrace Home (Corner)

Gross floor area  
301.21 sq.m (3,242.20 sq.ft)

Total terrace area  
65.79 sq.m (708.16 sq.ft)

Terraces: 2

Individual plot size  
224 sq.m (2,411 sq.ft)